



1 LOCATION PLAN
1:2000 @ A1

ARCHITECTURAL DRAWINGS

- DA00 - LOCATION PLAN / DRAWING LIST
- DA01 - DEMOLITION PLANS
- DA02 - SITE PLAN / SITE ANALYSIS
- DA03 - GROUND FLOOR PLAN
- DA04 - LEVEL 1 PLAN
- DA05 - LEVEL 2 PLAN
- DA06 - ROOF PLAN
- DA07 - NORTH ELEVATION
- DA08 - SOUTH ELEVATION
- DA09 - WEST ELEVATION
- DA10 - EAST ELEVATION
- DA11 - SECTION AA
- DA12 - SECTION BB
- DA13 - SHADOW DIAGRAMS - SHEET 1
- DA14 - SHADOW DIAGRAMS - SHEET 2
- DA15 - GFA PLANS
- DA16 - SIGNAGE PLANS
- DA17 - PHOTOMONTAGE
- DA18 - MATERIALS

BNM&H ARCHITECTS

BNM&H Architects and Architectus Group Pty Ltd is the owner of the copyright subsisting in these drawings, plans, designs and specifications. They must not be used, reproduced or copied, in whole or in part, nor may the information, ideas and concepts therein contained (which are confidential to Architectus Group Pty Ltd) be disclosed to any person without the prior written consent of that company.

Do not scale drawings. Verify all dimensions on site



issue	amendment	date
1	ISSUED FOR DEVELOPMENT APPLICATION	20/4/20

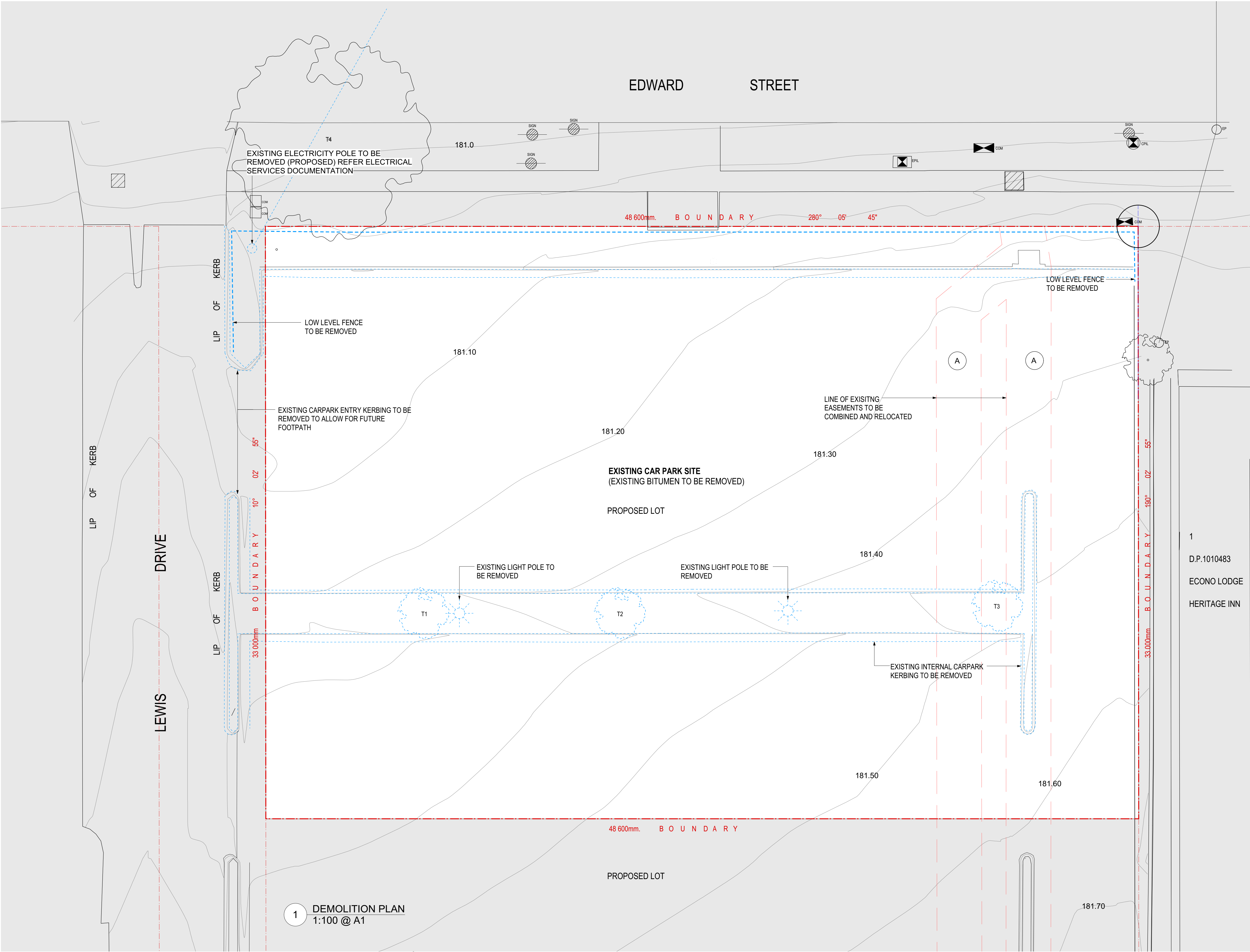


Budden Nangle Michael & Hudson Architects
17/130 Pacific Highway
Greenwich NSW 2065
T (61 2) 9906 5599
F (61 2) 9906 8220

project
UNSW BIOMEDICAL SCIENCE CENTRE

drawing

LOCATION PLAN/ DRAWING LIST	
scale	drawing no.
1:2000@A1; 1:4000@A3	
drawn	
checked	JP
project no.	957
20/4/20	1



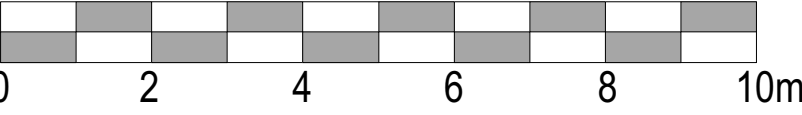
BNM&H ARCHITECTS

BNM&H Architects and Architectus Group Pty Ltd is the owner of the copyright subsisting in these drawings, plans, designs and specifications. They must not be used, reproduced or copied, in whole or in part, nor may the information, ideas and concepts therein contained (which are confidential to Architectus Group Pty Ltd) be disclosed to any person without the prior written consent of that company.

Do not scale drawings. Verify all dimensions on site



issue	amendment	date
1	ISSUED FOR DEVELOPMENT APPLICATION	20/4/20



SCALE 1: 100 @ A1

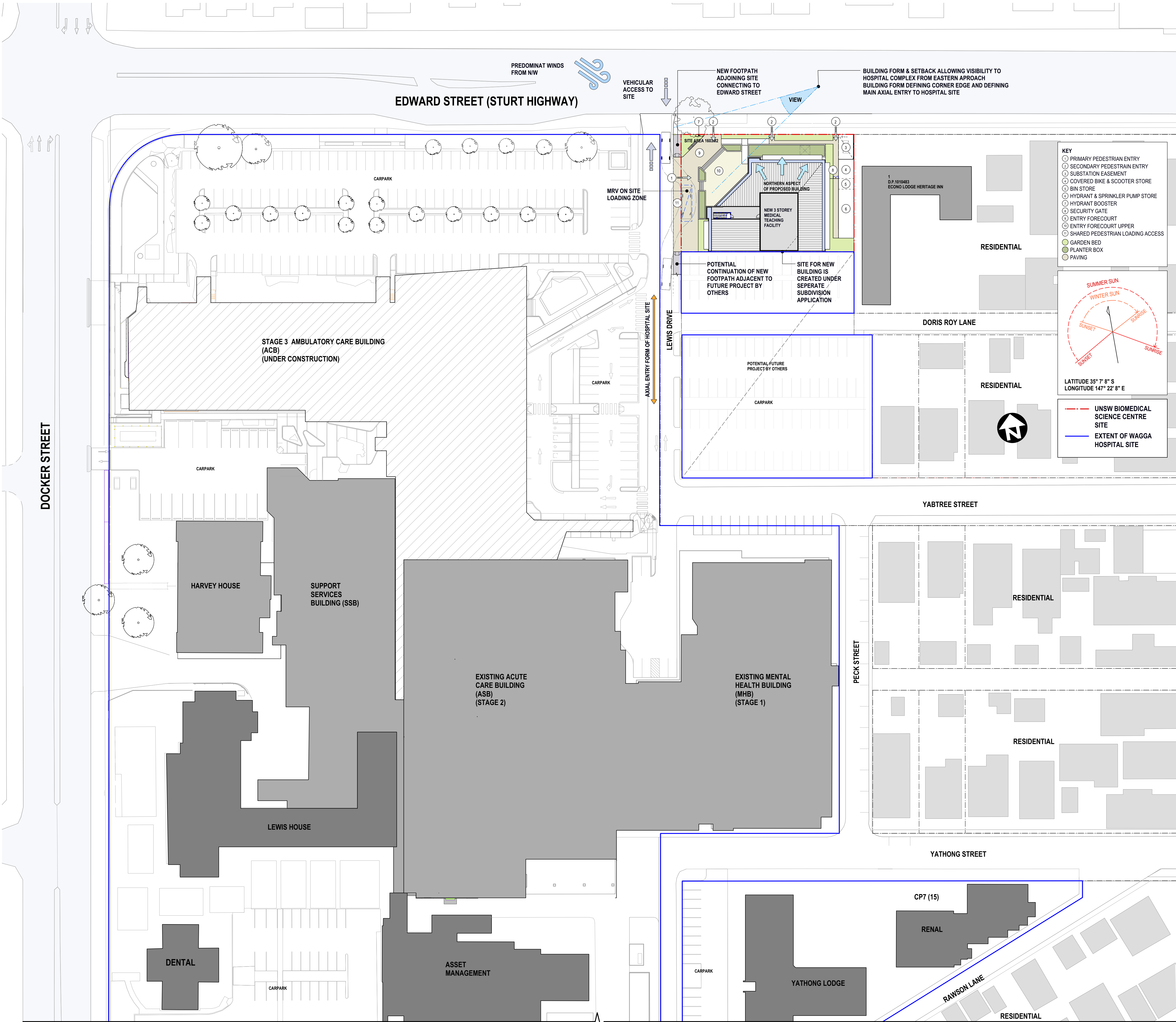


Budden Nangle Michael
& Hudson Architects
17/130 Pacific Highway
Greenwich NSW 2005
T (61 2) 9906 5599
F (61 2) 9906 8220

project
UNSW BIOMEDICAL SCIENCE
CENTRE

drawing

DEMOLITION PLANS
scale
1:100@A1; 1:200@A3
drawing no.
drawn
JP
checked
JP
issue
DA01
project no.
957
1
20/4/20



BNM&H ARCHITECTS

BNM&H Architects and Architectus Group Pty Ltd is the owner of the copyright subsisting in these drawings, plans, designs and specifications. They must not be used, reproduced or copied, in whole or in part, nor may the information, ideas and concepts therein contained (which are confidential to Architectus Group Pty Ltd) be disclosed to any person without the prior written consent of that company.

Do not scale drawings. Verify all dimensions on site



issue	amendment	date
1	ISSUED FOR DEVELOPMENT APPLICATION	20/4/20



SCALE 1: 500 @ A1



Budden Nangle Michael & Hudson Architects
17/130 Pacific Highway
Greenwich NSW 2005
T (61 2) 9906 5599
F (61 2) 9906 8220

project
UNSW BIOMEDICAL SCIENCE CENTRE

drawing

SITE PLAN/ SITE ANALYSIS

scale 1:500@A1; 1:1000@A3 drawing no.

drawn JP DA02

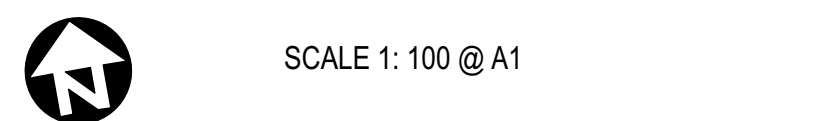
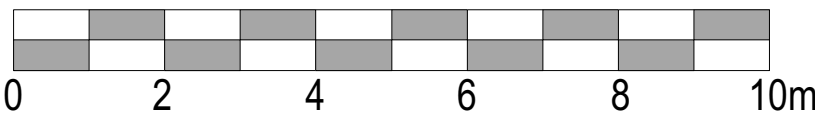
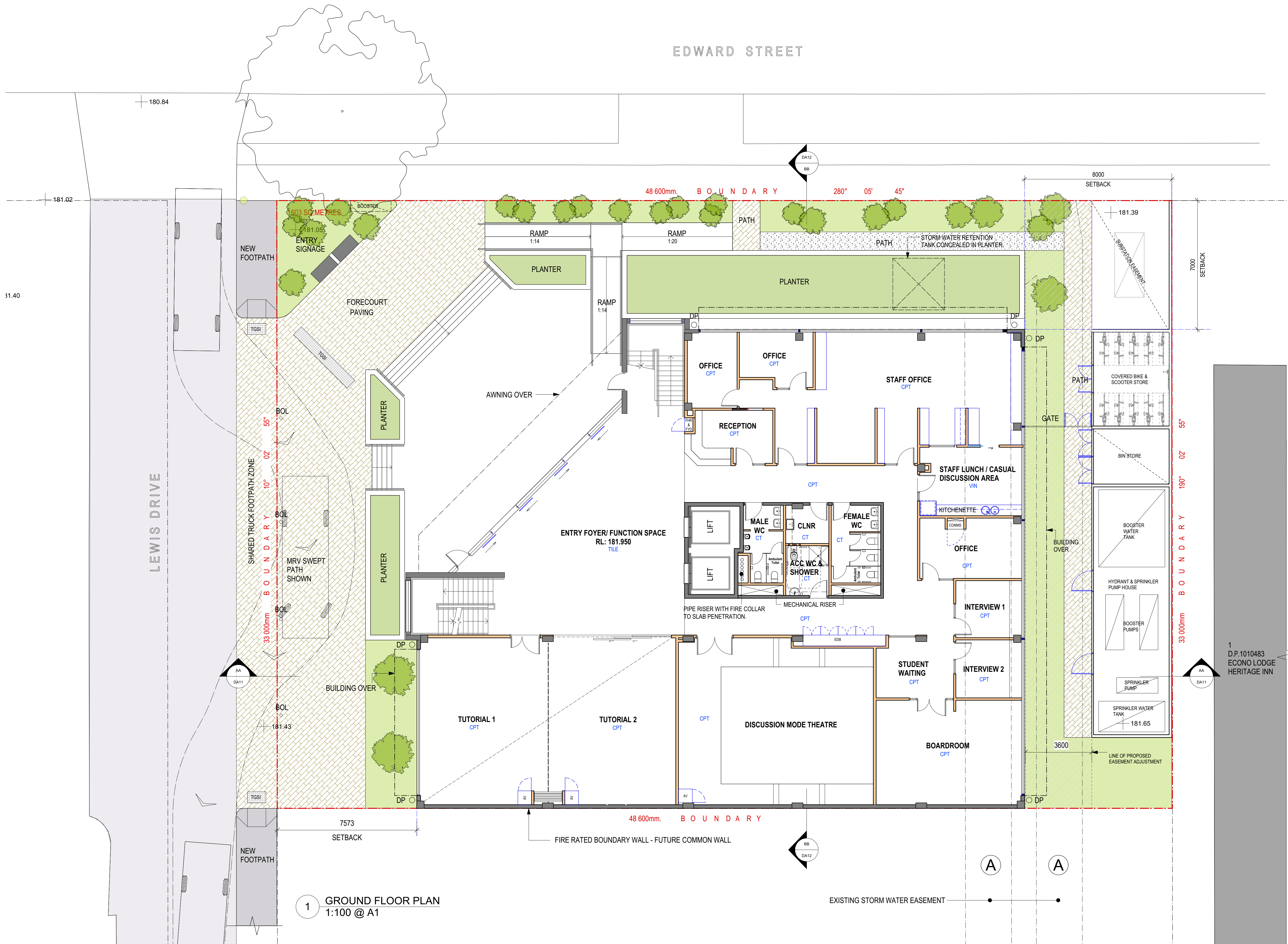
checked issue

project no. 957 1

20/4/20



issue	amendment	date
1	ISSUED FOR DEVELOPMENT APPLICATION	20/4/20



Budden Nangle Michael
& Hudson Architects
17/130 Pacific Highway
Greenwich NSW 2005
T (61 2) 9906 5599
F (61 2) 9906 8220

project
UNSW BIOMEDICAL SCIENCE CENTRE

drawing

GROUND FLOOR PLAN

scale
1:100@A1; 1:200@A3

drawn
JP

checked
issue

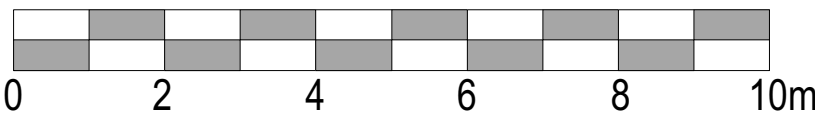
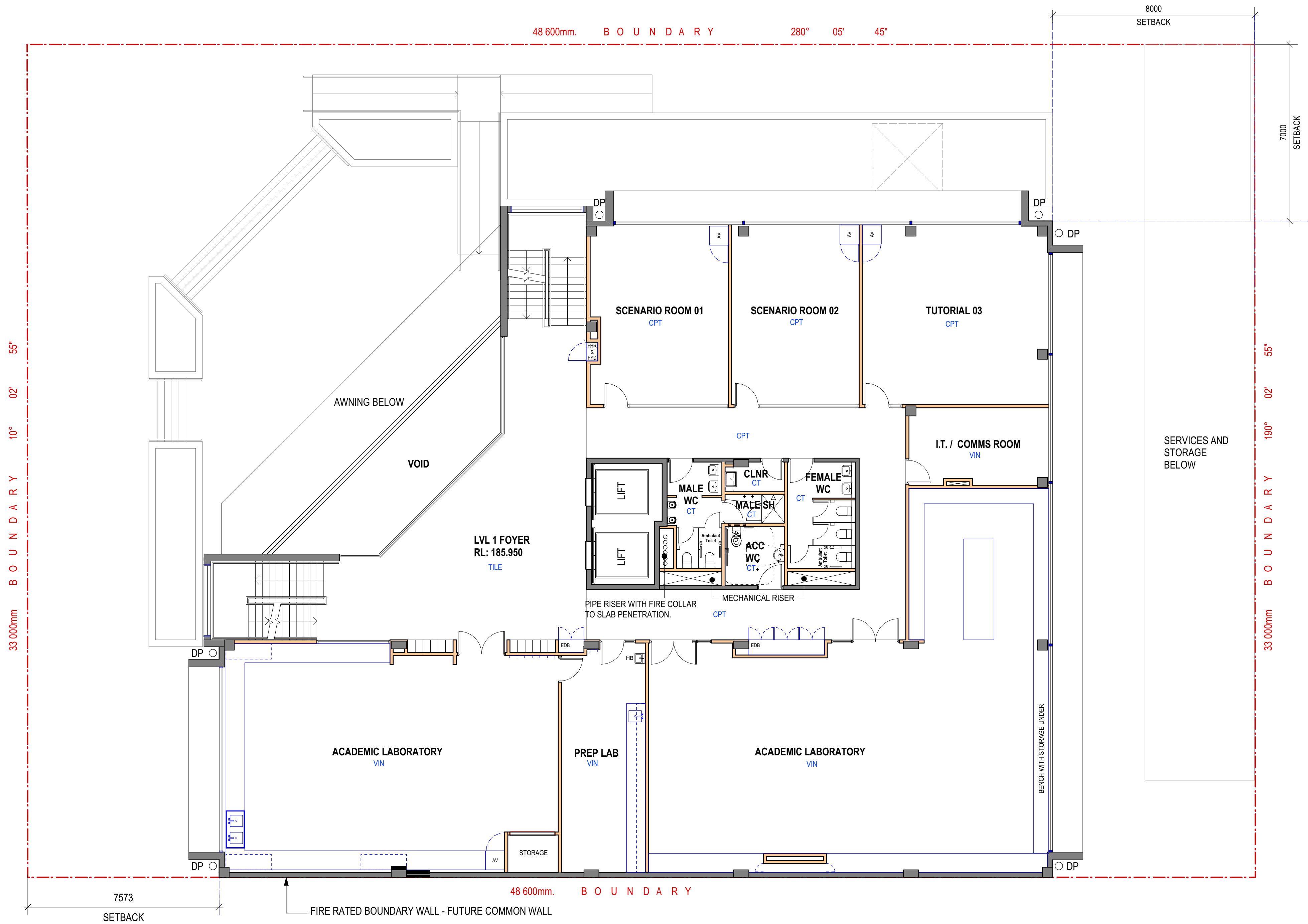
project no.
957

20/4/20



Do not scale drawings. Verify all dimensions on site

issue	amendment	date
1	ISSUED FOR DEVELOPMENT APPLICATION	20/4/20



SCALE 1: 100 @ A1



Budden Nangle Michael
& Hudson Architects
17/130 Pacific Highway
Greenwich NSW 2005
T (61 2) 9906 5599
F (61 2) 9906 8220

project
UNSW BIOMEDICAL SCIENCE
CENTRE

drawing

LEVEL 1 PLAN

scale 1:100@A1; 1:200@A3 drawing no.

drawn JP issue DA04

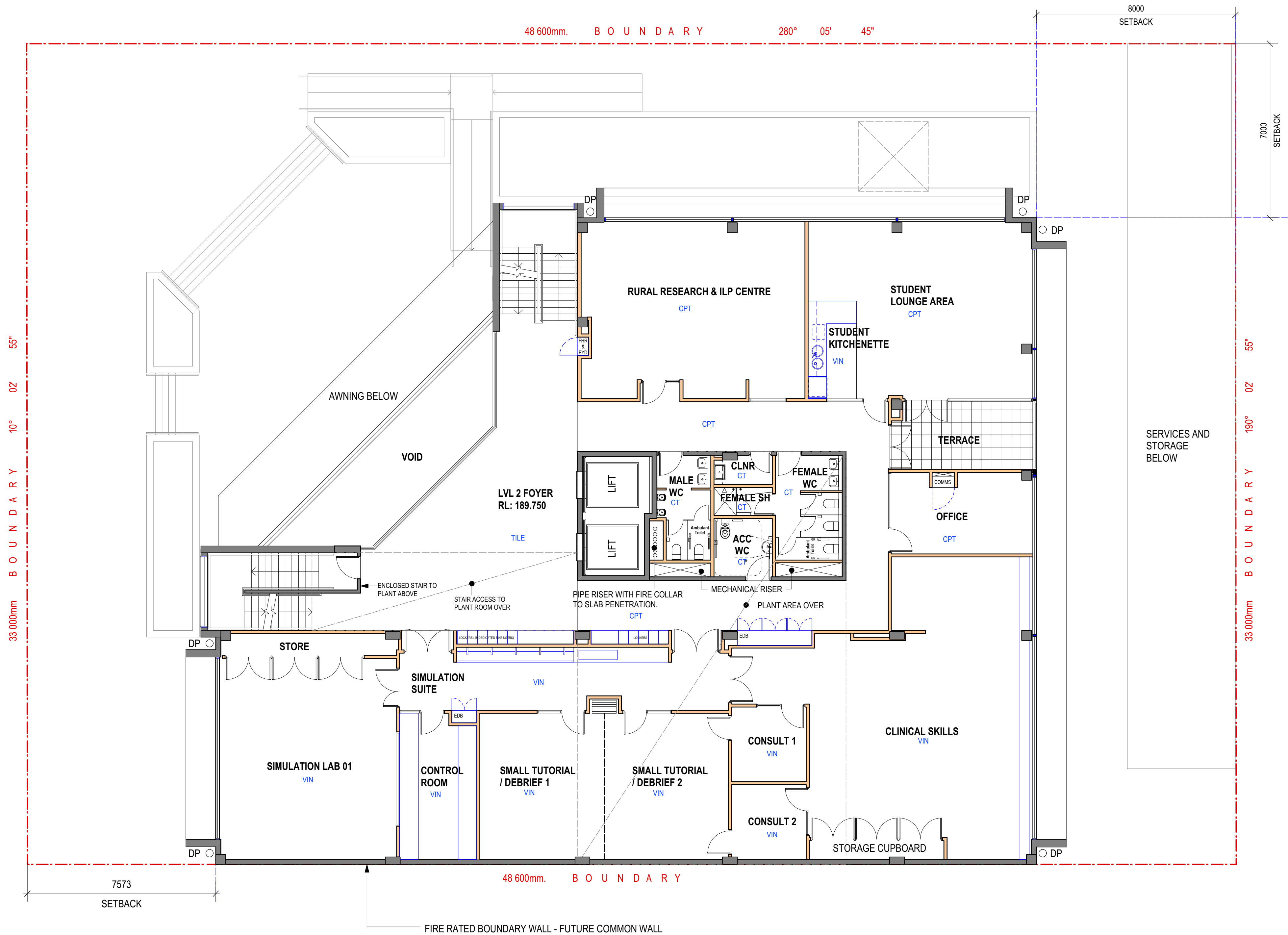
checked project no. 957

20/4/20 1

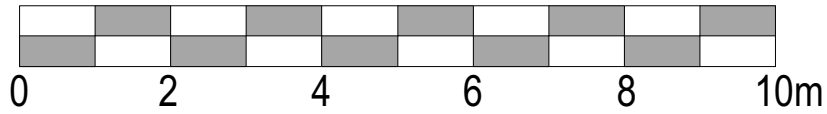


Do not scale drawings. Verify all dimensions on site

issue	amendment	date
1	ISSUED FOR DEVELOPMENT APPLICATION	20/4/20



1 LEVEL 2 PLAN
1:100 @ A1



SCALE 1: 100 @ A1



Budden Nangle Michael
& Hudson Architects
17/130 Pacific Highway
Greenwich NSW 2005
T (61 2) 9906 5599
F (61 2) 9906 8220

project
UNSW BIOMEDICAL SCIENCE
CENTRE

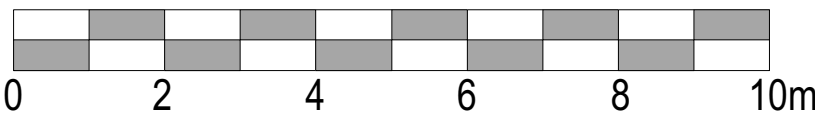
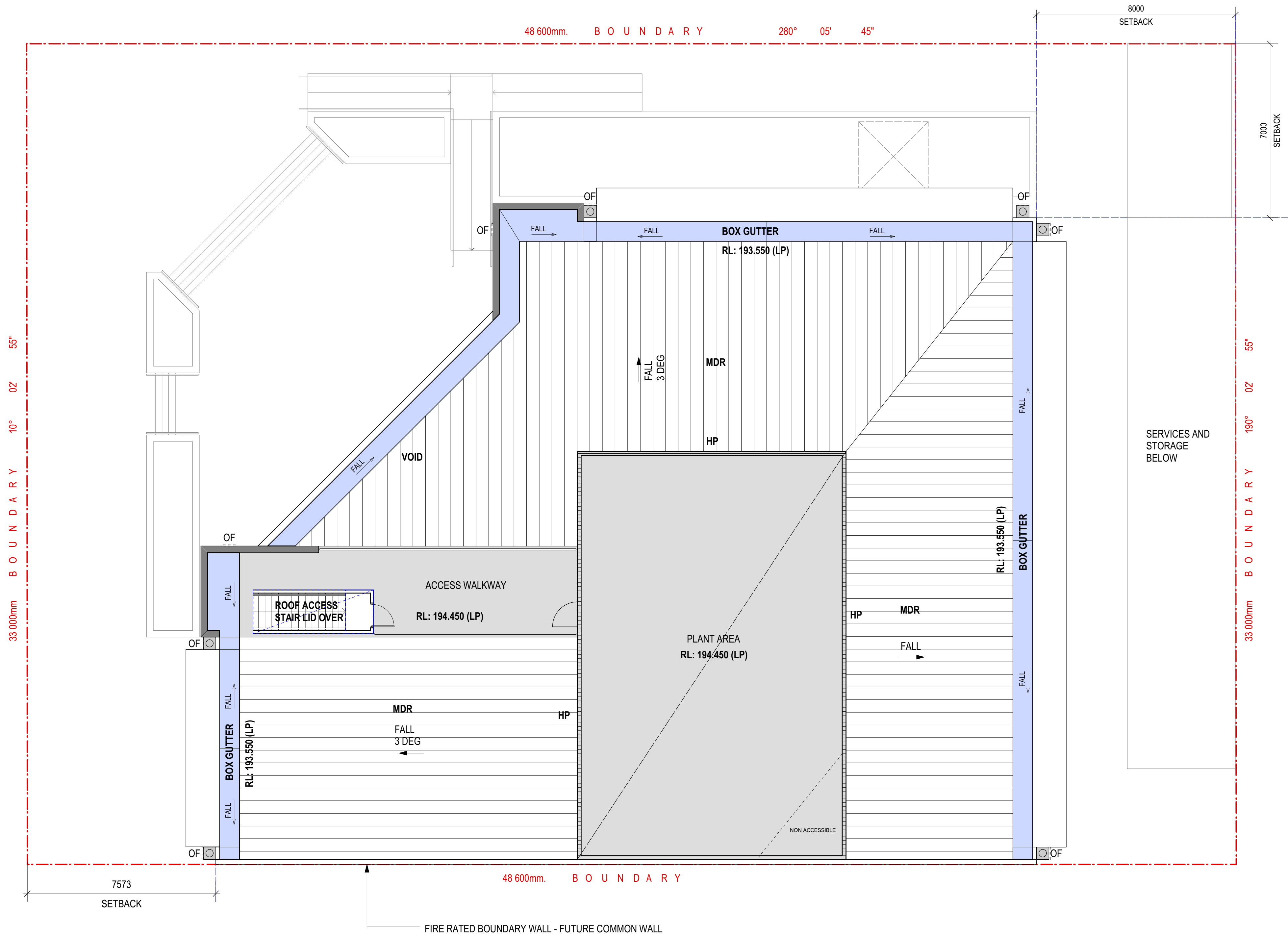
drawing

scale	drawing no.
1:100@A1; 1:200@A3	LEVEL 2 PLAN
drawn	DA05
checked	JP
project no.	957
20/4/20	1



Do not scale drawings. Verify all dimensions on site

issue	amendment	date
1	ISSUED FOR DEVELOPMENT APPLICATION	20/4/20



SCALE 1: 100 @ A1



Budden Nangle Michael
& Hudson Architects
17/130 Pacific Highway
Greenwich NSW 2005
T (61 2) 9906 5599
F (61 2) 9906 8220

project
UNSW BIOMEDICAL SCIENCE
CENTRE

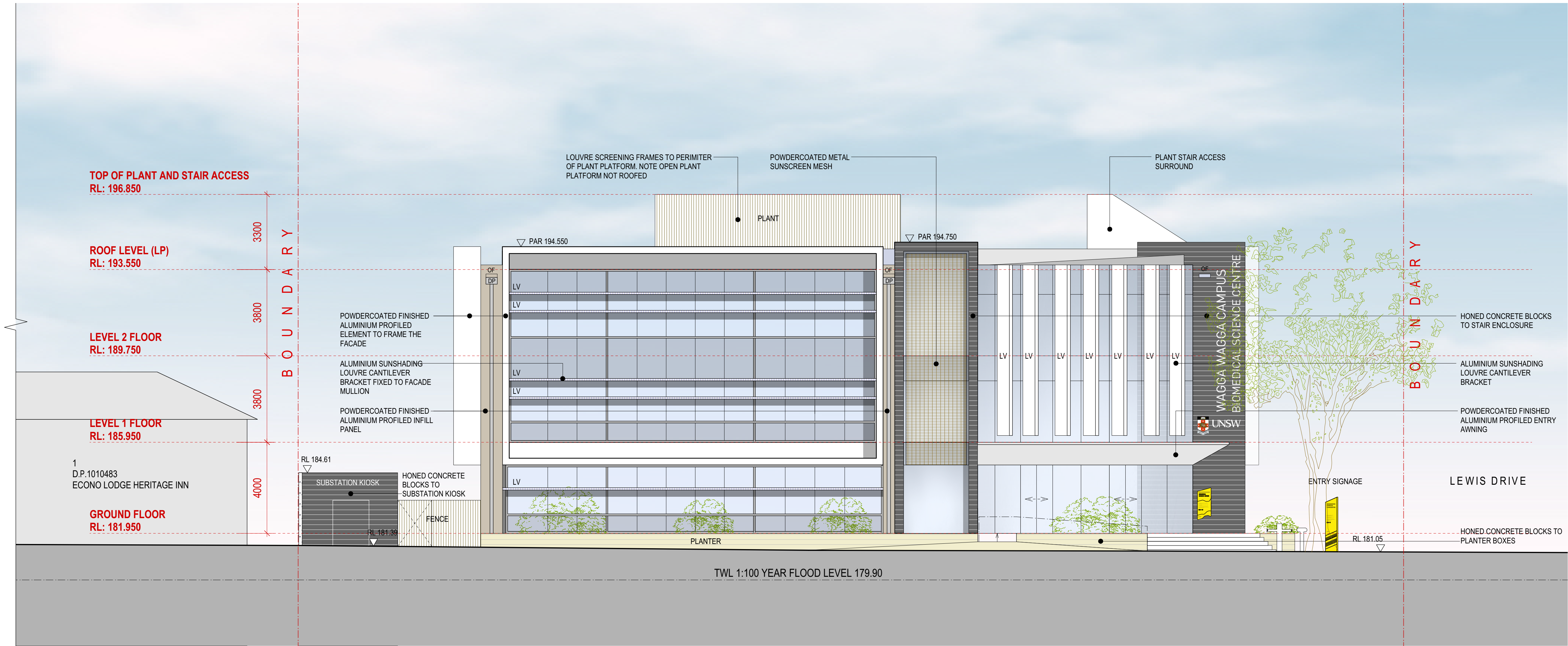
drawing

scale	drawing no.
1:100@A1; 1:200@A3	ROOF PLAN
drawn	DA06
checked	JP
project no.	957
20/4/20	1



Do not scale drawings. Verify all dimensions on site

issue	amendment	date
1	ISSUED FOR DEVELOPMENT APPLICATION	20/4/20



1 NORTH ELEVATION
1:100 @ A1



Budden Nangle Michael
& Hudson Architects
17/130 Pacific Highway
Greenwich NSW 2005
T (61 2) 9906 5599
F (61 2) 9906 8220

project
UNSW BIOMEDICAL SCIENCE
CENTRE

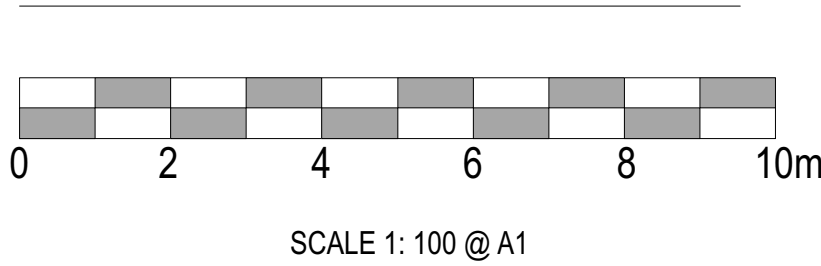
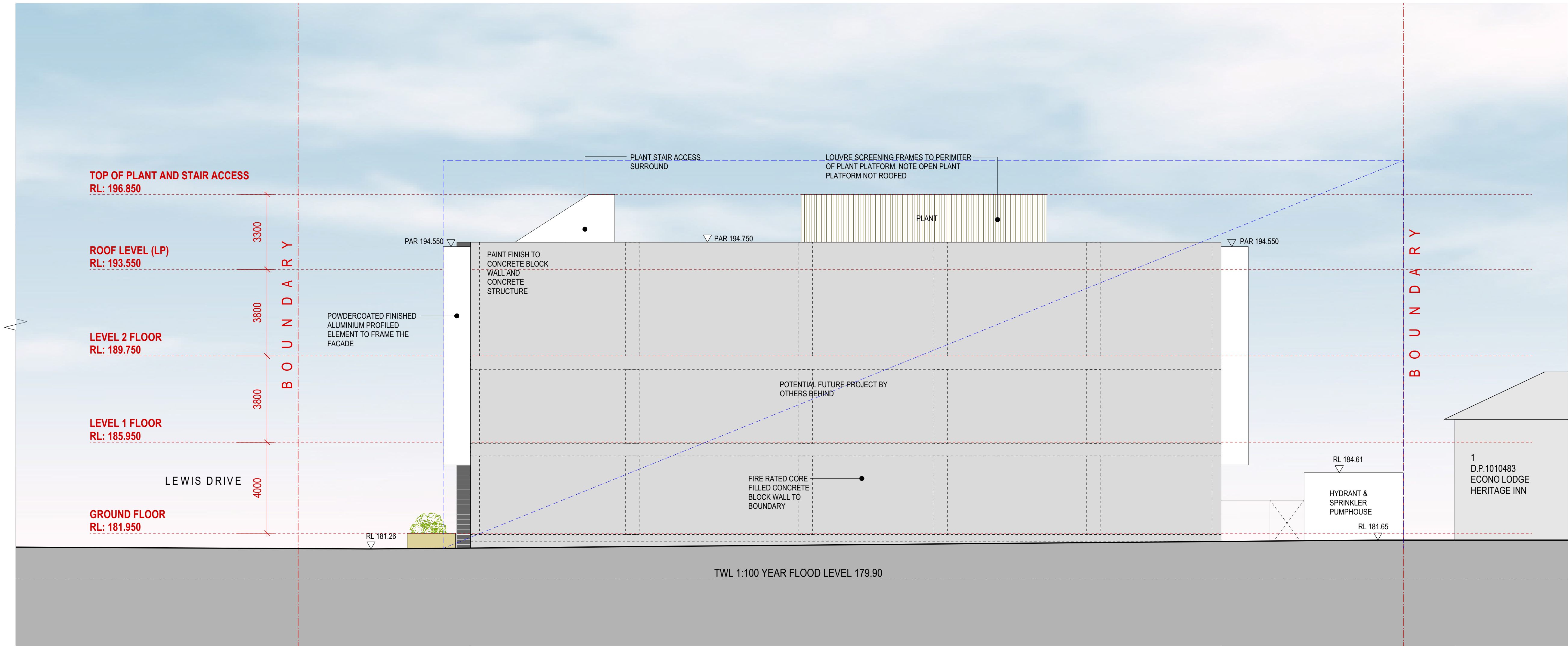
drawing

NORTH ELEVATION
scale 1:100@A1; 1:200@A3 drawing no.
drawn JP
checked issue
project no. 957 1
20/4/20



Do not scale drawings. Verify all dimensions on site

issue	amendment	date
1	ISSUED FOR DEVELOPMENT APPLICATION	20/4/20



1 SOUTH ELEVATION
1:100 @ A1



Budden Nangle Michael
& Hudson Architects
17/130 Pacific Highway
Greenwich NSW 2005
T (61 2) 9906 5599
F (61 2) 9906 8220

project
UNSW BIOMEDICAL SCIENCE
CENTRE

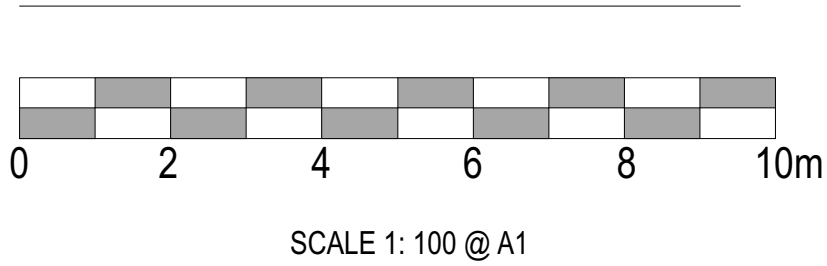
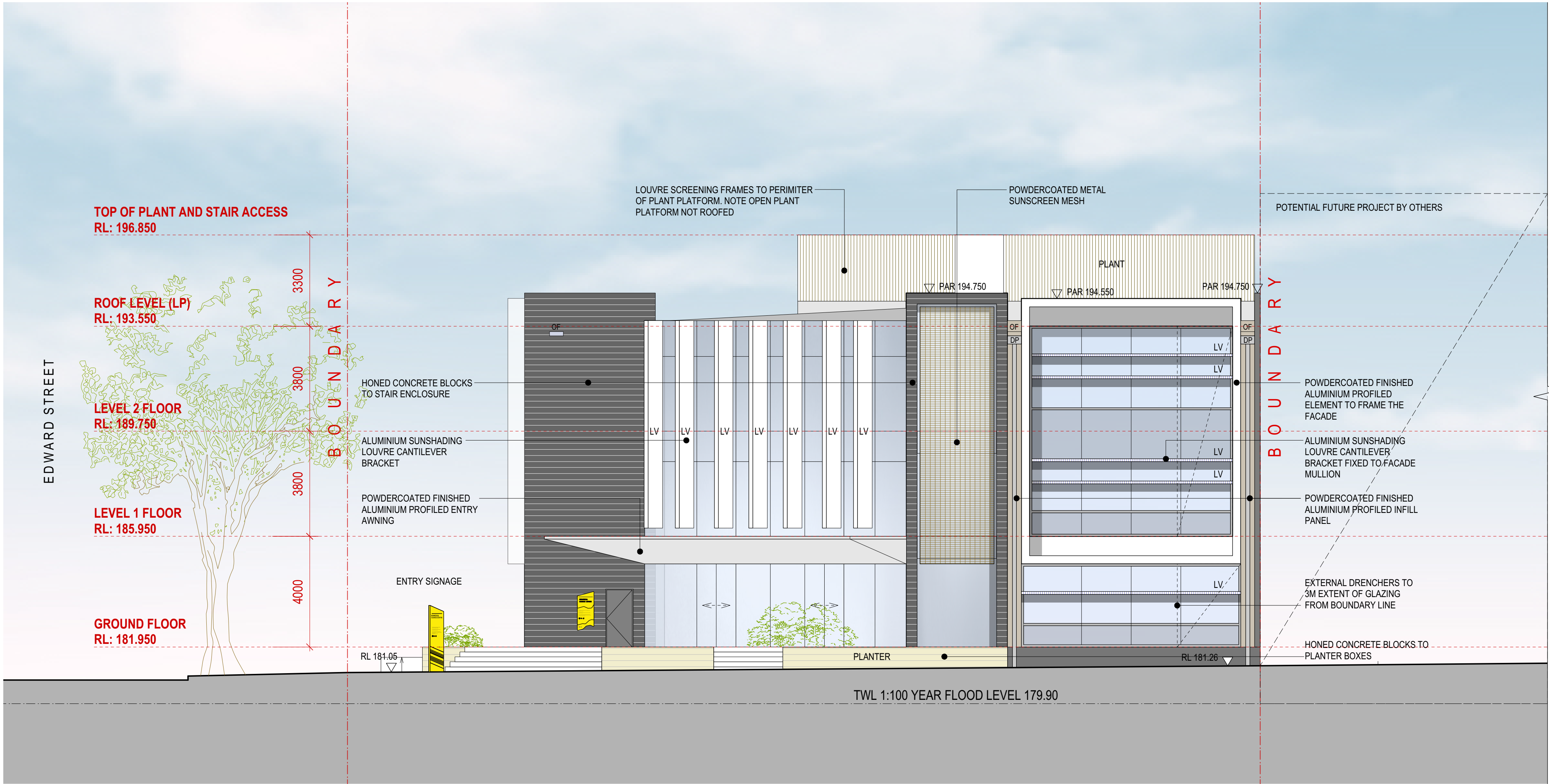
drawing

SOUTH ELEVATION
scale 1:100@A1; 1:200@A3
drawn JP
checked
project no. 957
drawing no. DA08
issue
1
20/4/20



Do not scale drawings. Verify all dimensions on site

issue	amendment	date
1	ISSUED FOR DEVELOPMENT APPLICATION	20/4/20



1 WEST ELEVATION
1:100 @ A1



Budden Nangle Michael
& Hudson Architects
17/130 Pacific Highway
Greenwich NSW 2005
T (61 2) 9906 5599
F (61 2) 9906 8220

project
UNSW BIOMEDICAL SCIENCE
CENTRE

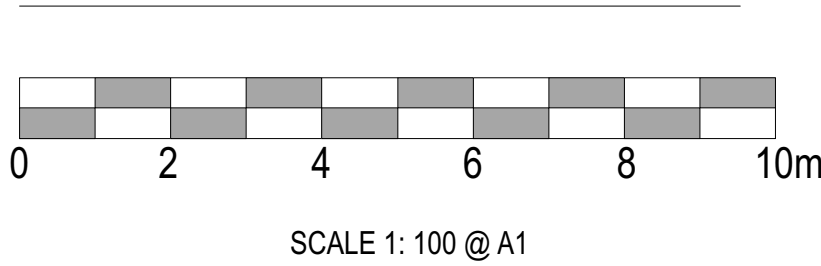
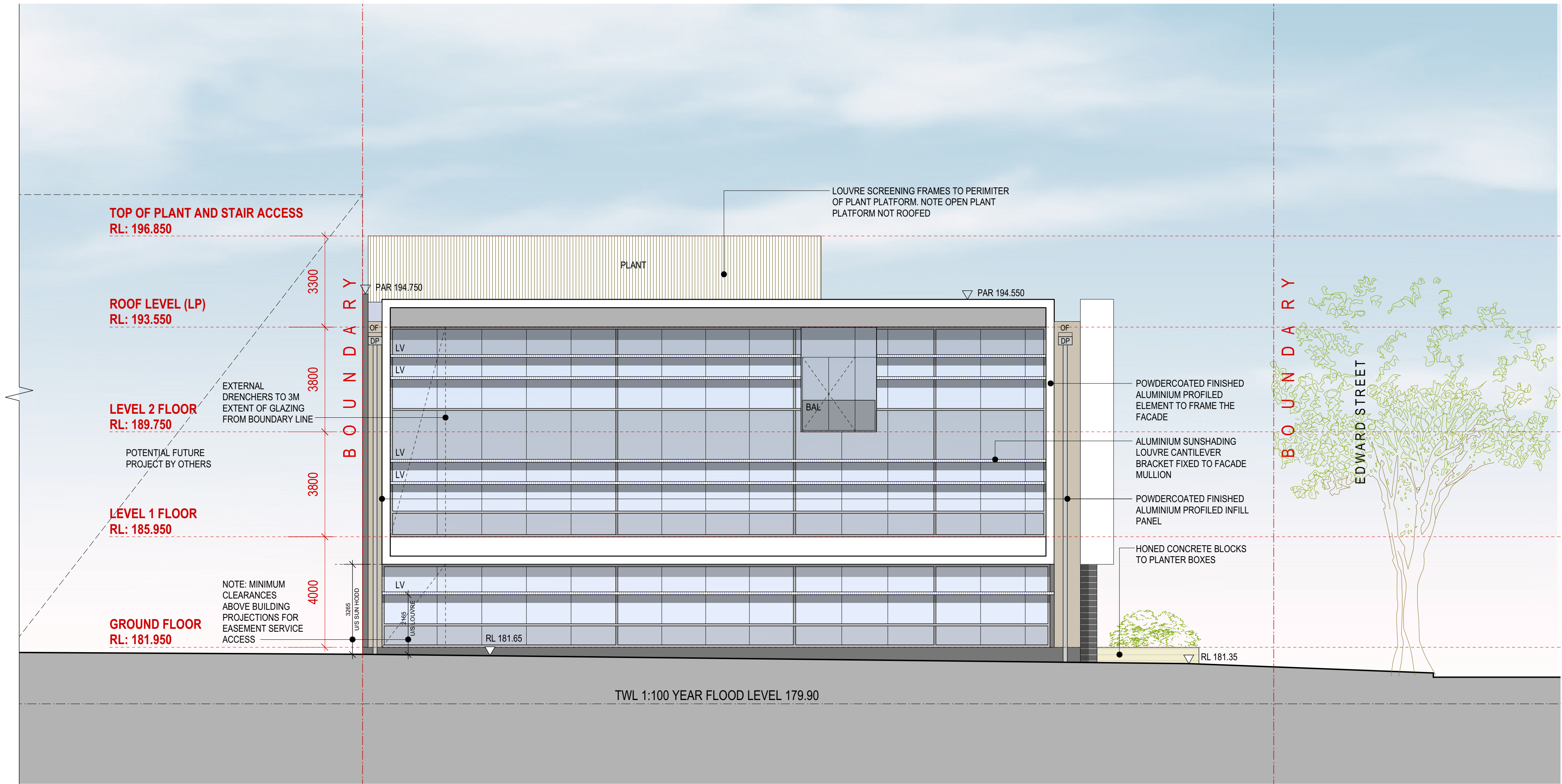
drawing

WEST ELEVATION
scale 1:100@A1; 1:200@A3 drawing no.
drawn JP
checked issue
project no. 957 1
20/4/20



Do not scale drawings. Verify all dimensions on site

issue	amendment	date
1	ISSUED FOR DEVELOPMENT APPLICATION	20/4/20



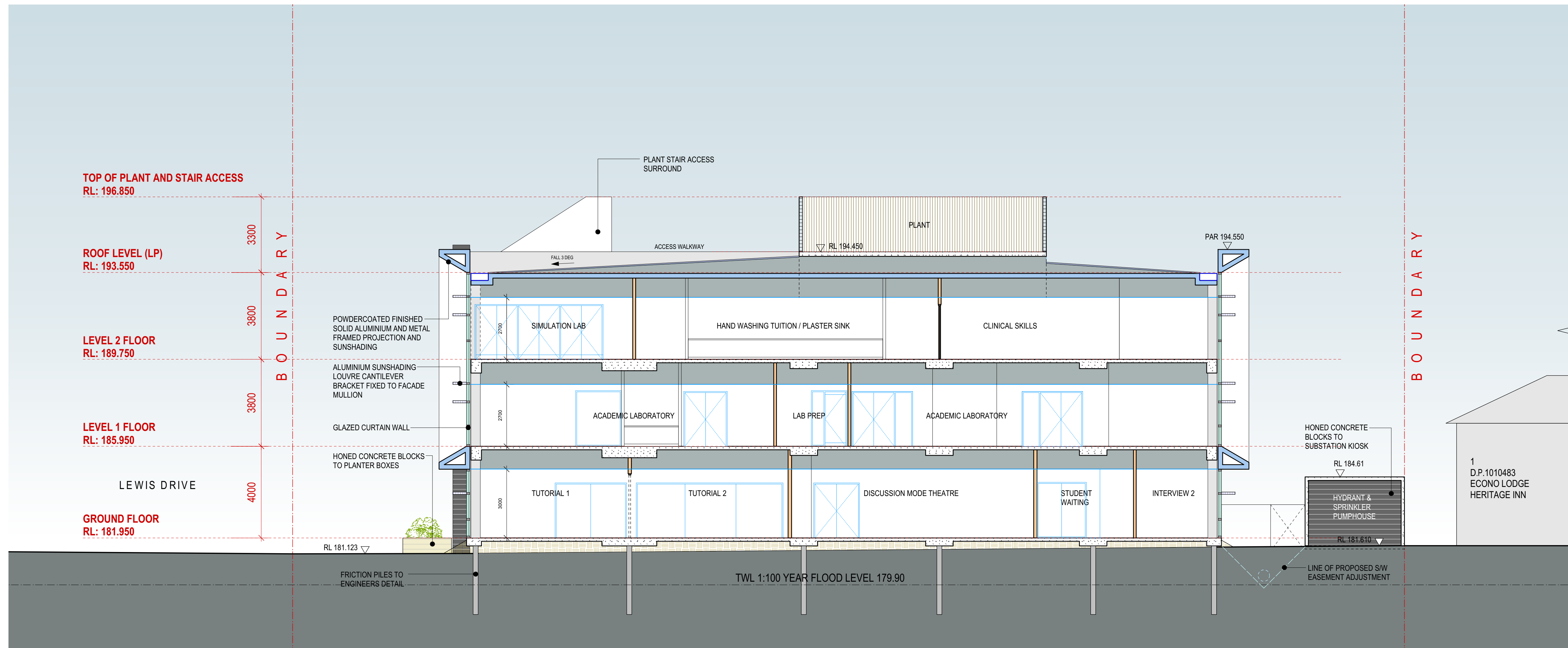
Budden Nangle Michael & Hudson Architects
17/130 Pacific Highway
Greenwich NSW 2005
T (61 2) 9906 5599
F (61 2) 9906 8220

project
UNSW BIOMEDICAL SCIENCE CENTRE

drawing

EAST ELEVATION
scale 1:100@A1; 1:200@A3 drawing no.
drawn JP DA10
checked issue
project no. 957 1
20/4/20

issue	amendment	date
1	ISSUED FOR DEVELOPMENT APPLICATION	20/4/20



1 SECTION AA
1:100 @ A1

0 2 4 6 8 10m

SCALE 1: 100 @ A1



**Budden Nangle Michael
& Hudson Architects**
17/130 Pacific Highway
Greenwich NSW 2065
T (61 2) 9906 5599
F (61 2) 9906 8220

project

UNSW BIOMEDICAL SCIENCE
CENTRE

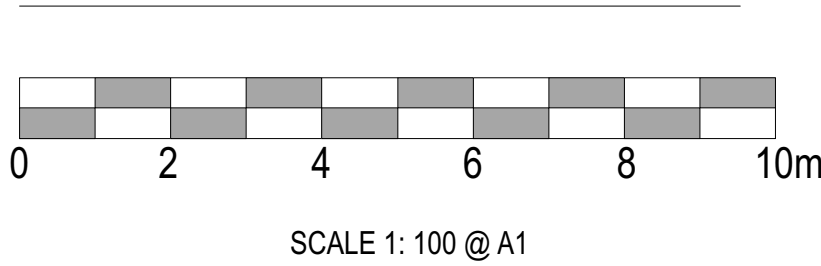
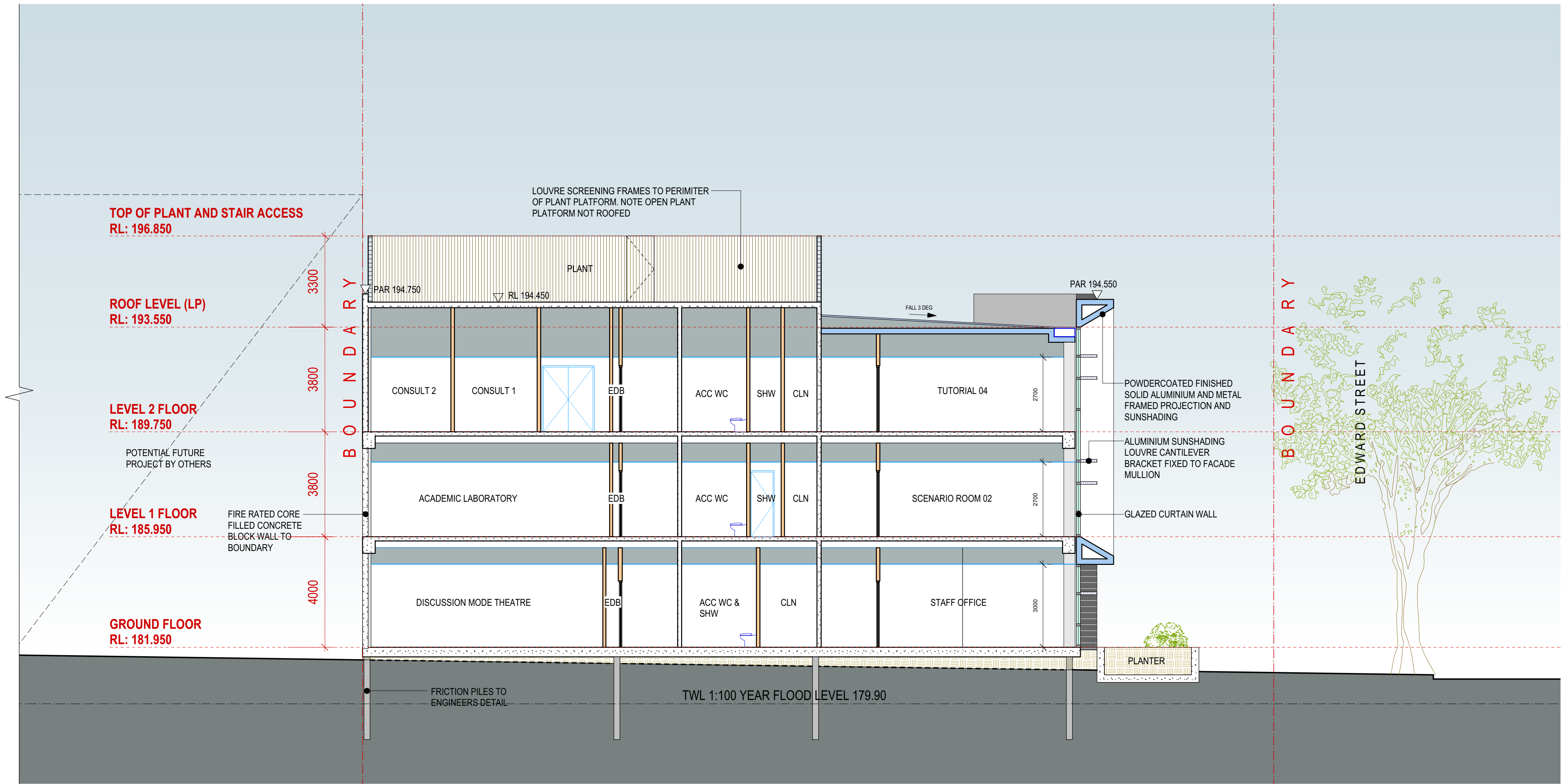
drawing

SECTION AA	
scale	drawing no.
1:100@A1; 1:200@A3	
drawn	DA11
JP	issue
checked	
project no.	
957	1



Do not scale drawings. Verify all dimensions on site

issue	amendment	date
1	ISSUED FOR DEVELOPMENT APPLICATION	20/4/20

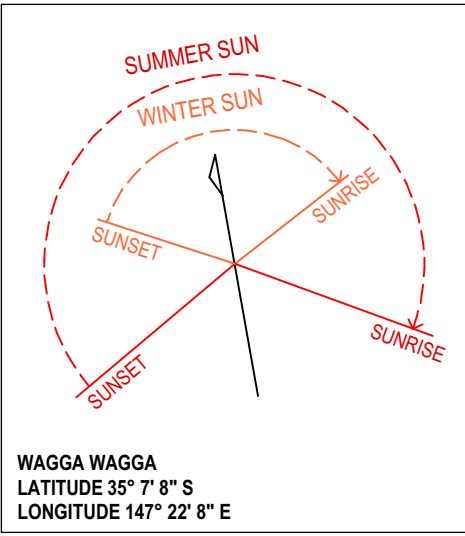
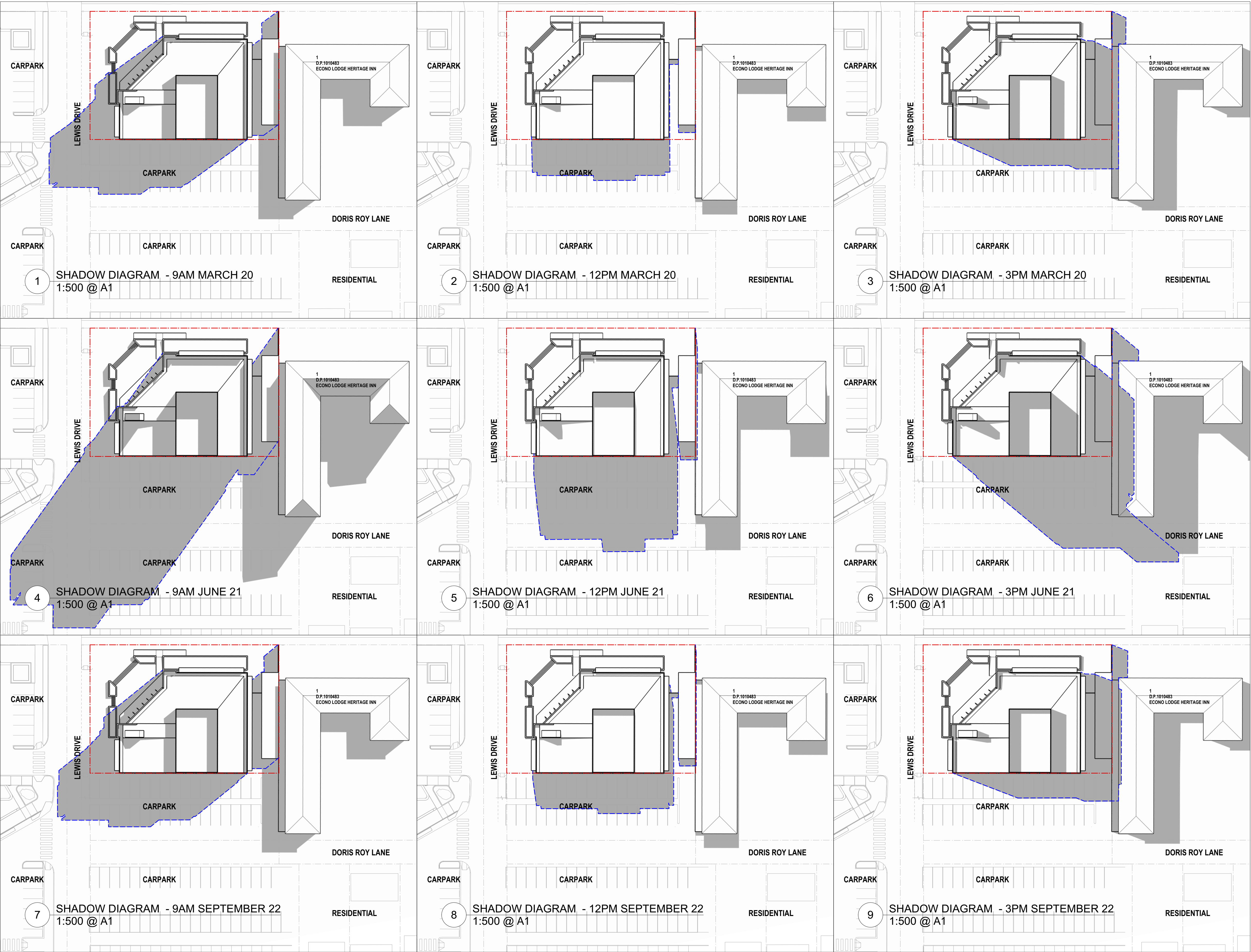


Budden Nangle Michael
& Hudson Architects
17/130 Pacific Highway
Greenwich NSW 2005
T (61 2) 9906 5599
F (61 2) 9906 8220

project
UNSW BIOMEDICAL SCIENCE
CENTRE

drawing

SECTION BB
scale 1:100@A1; 1:200@A3 drawing no.
drawn JP
checked issue
project no. 957 1
20/4/20



NOTE:
REFER ARCHITECTURAL DRAWING DA14 FOR WEST ELEVATION
OF ADJOINING PROPERTY (ECONO LODGE HERITAGE INN) FOR
FURTHER INFORMATION

--- SHADOW CAST FROM
PROPOSED
DEVELOPMENT

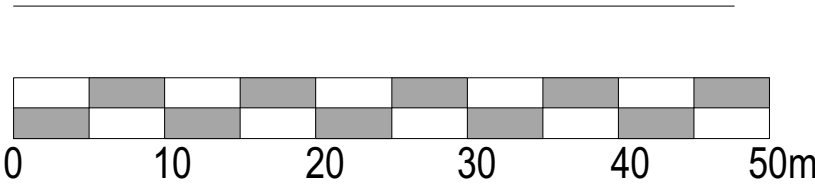
BNM&H ARCHITECTS

BNM&H Architects and Architectus Group Pty Ltd is the owner of the copyright subsisting in these drawings, plans, designs and specifications. They must not be used, reproduced or copied, in whole or in part, nor may the information, ideas and concepts therein contained (which are confidential to Architectus Group Pty Ltd) be disclosed to any person without the prior written consent of that company.

Do not scale drawings. Verify all dimensions on site



issue	amendment	date
1	ISSUED FOR DEVELOPMENT APPLICATION	20/4/20



SCALE 1: 500 @ A1



Budden Nangle Michael
& Hudson Architects
17/130 Pacific Highway
Greenwich NSW 2005
T (61 2) 9906 5599
F (61 2) 9906 8220

project
UNSW BIOMEDICAL SCIENCE
CENTRE

drawing

SHADOW DIAGRAMS - SHEET 1

scale
1:500@A1; 1:1000@A3

drawn
JP

checked
JP

project no.
957

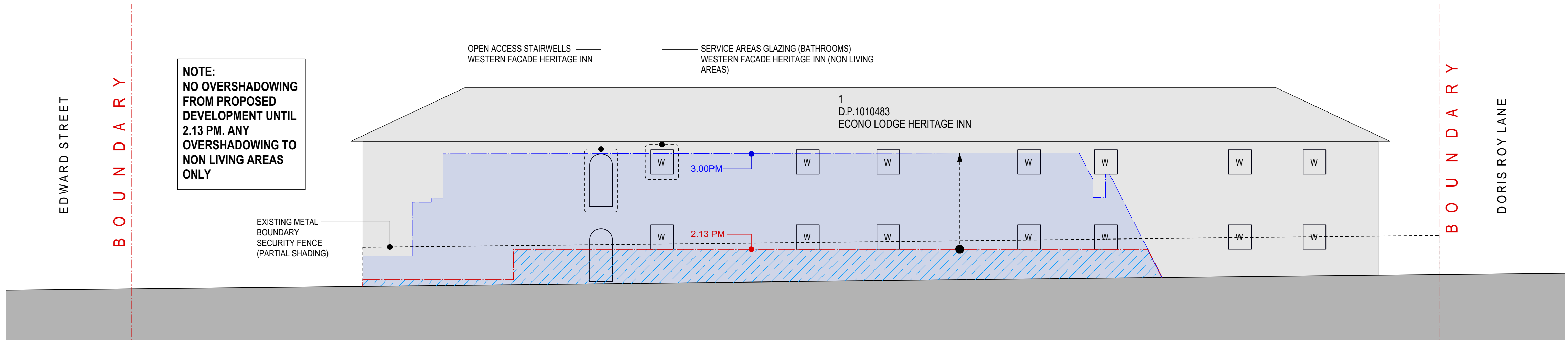
20/4/20

1

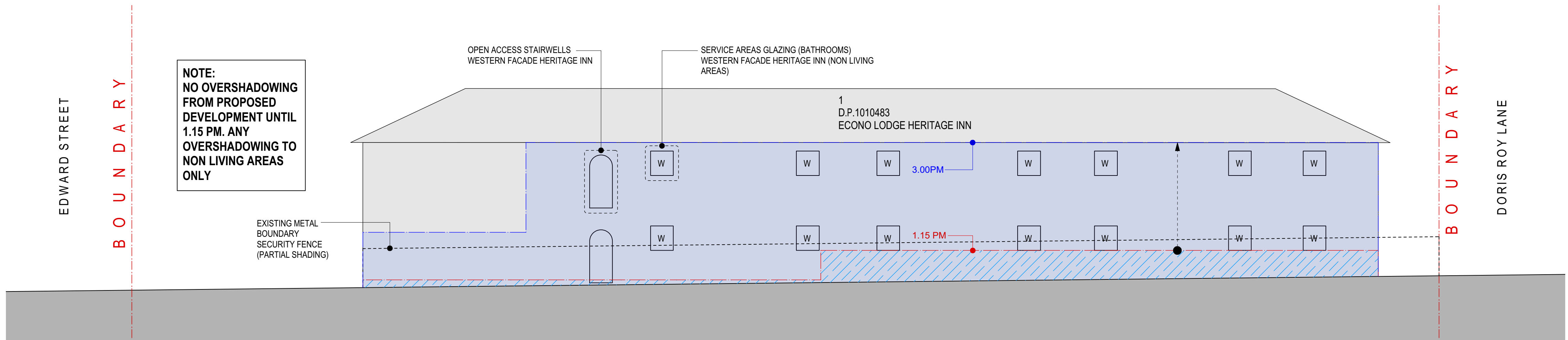
DA13



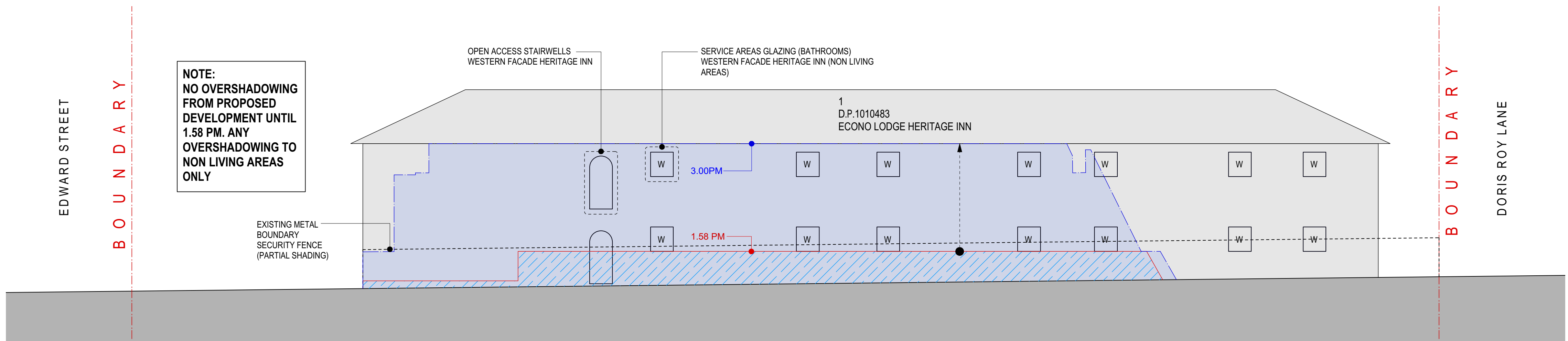
issue	amendment	date
1	ISSUED FOR DEVELOPMENT APPLICATION	20/4/20



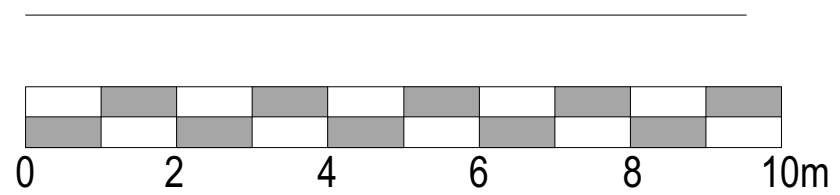
1 SHADOW DIAGRAM - MARCH 20 (ADJOINING PROPERTY WEST ELEVATION)
1:100 @ A1



2 SHADOW DIAGRAM - JUNE 21 (ADJOINING PROPERTY WEST ELEVATION)
1:500 @ A1



3 SHADOW DIAGRAM - SEPTEMBER 22 (ADJOINING PROPERTY WEST ELEVATION)
1:500 @ A1



SCALE 1: 100 @ A1



Budden Nangle Michael
& Hudson Architects
17/130 Pacific Highway
Greenwich NSW 2005
T (61 2) 9906 5599
F (61 2) 9906 8220

project
UNSW BIOMEDICAL SCIENCE
CENTRE

drawing

SHADOW DIAGRAMS - SHEET 2

scale 1:100@A1; 1:200@A3 drawing no.

drawn JP DA14

checked issue

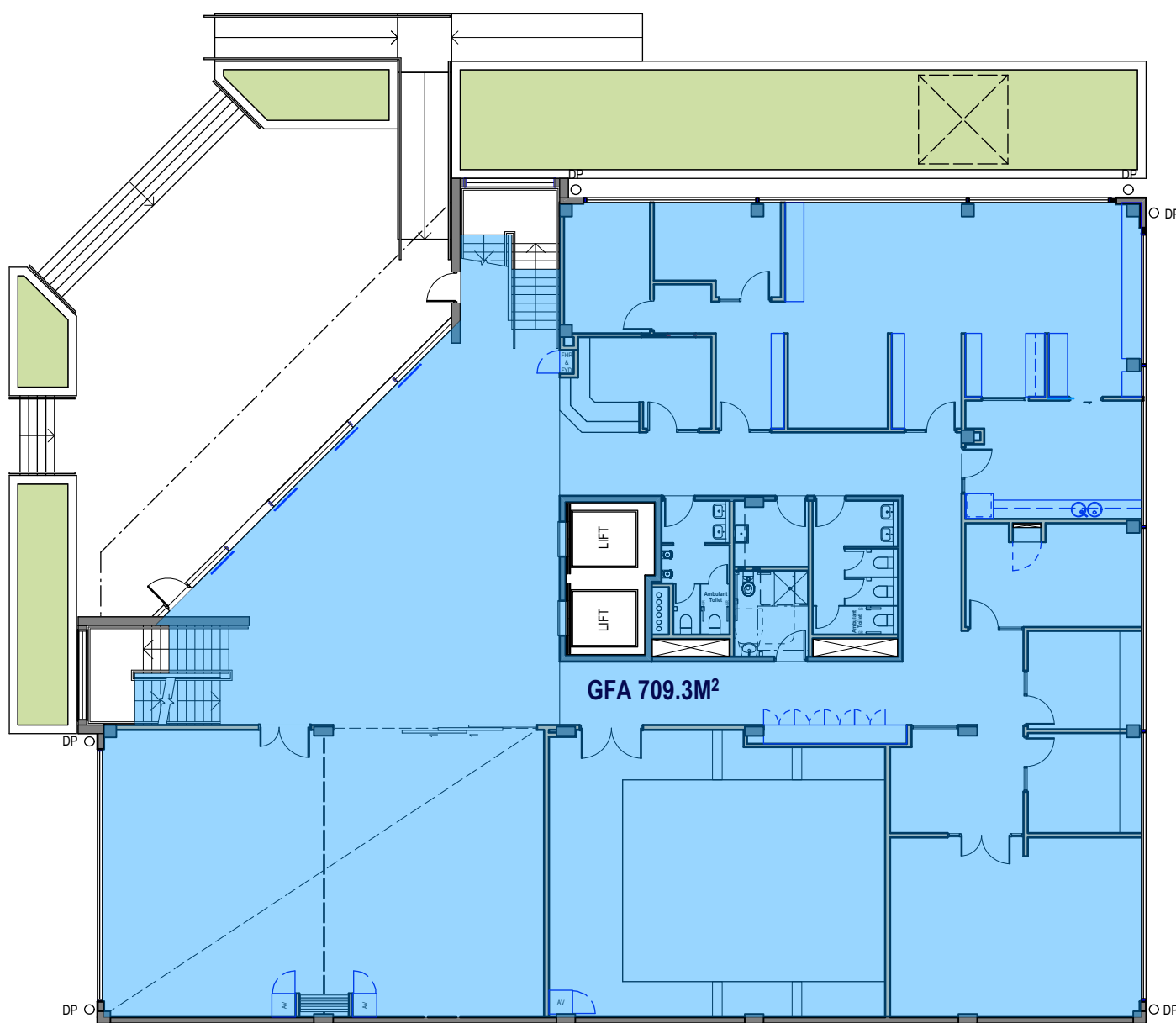
project no. 957 1

20/4/20

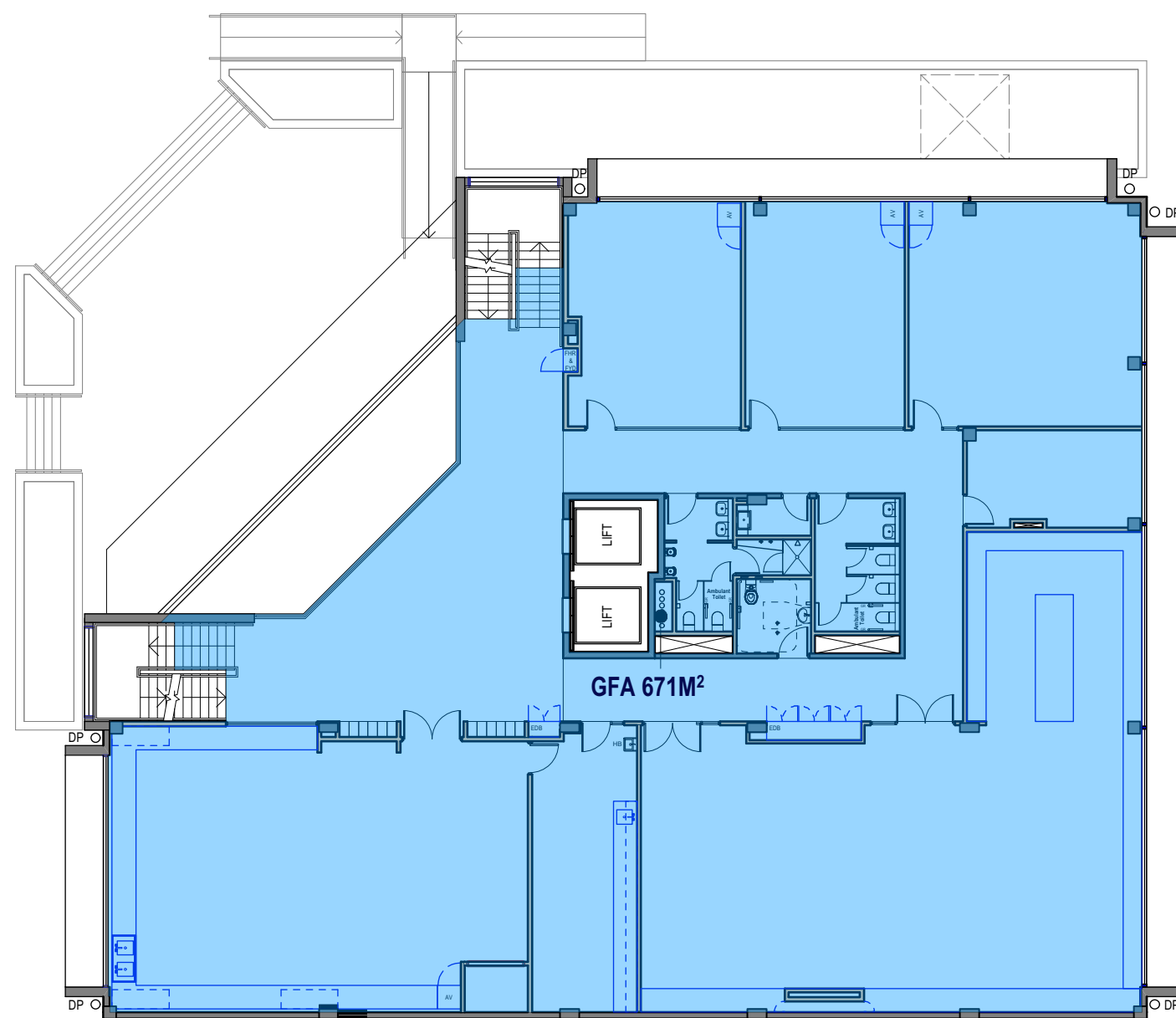


Do not scale drawings. Verify all dimensions on site

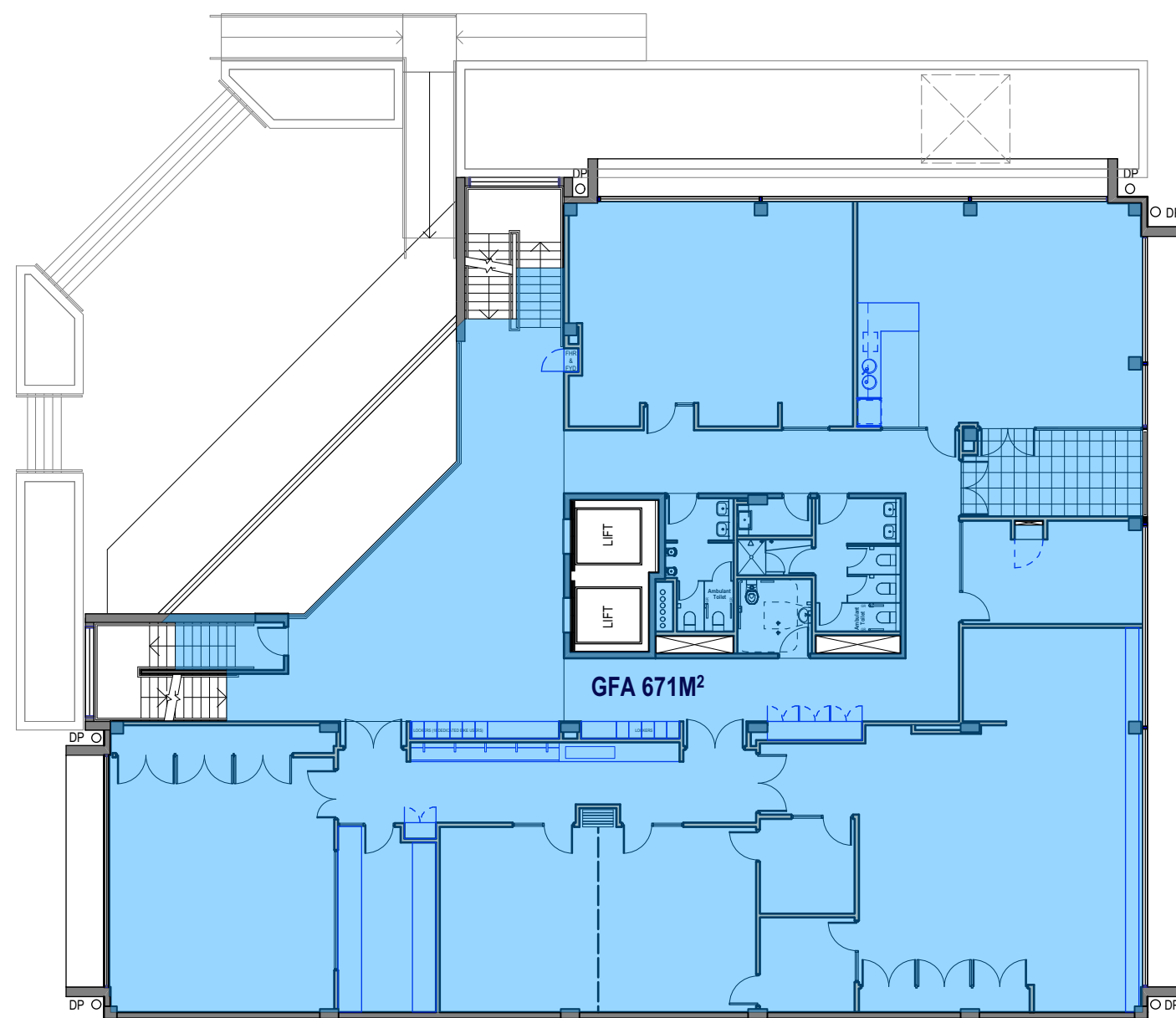
issue	amendment	date
1	ISSUED FOR DEVELOPMENT APPLICATION	20/4/20



1 GROUND FLOOR
1:200 @ A1

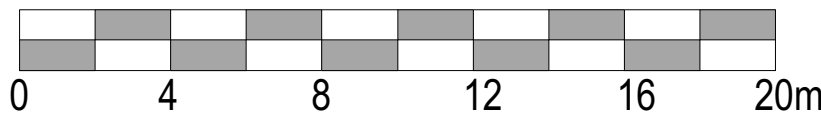


2 LEVEL 1
1:200 @ A1



3 LEVEL 2
1:200 @ A1

SITE AREA = 1603M2
TOTAL GFA = 2051.3M2
FSR = 1.28:1



SCALE 1: 200 @ A1

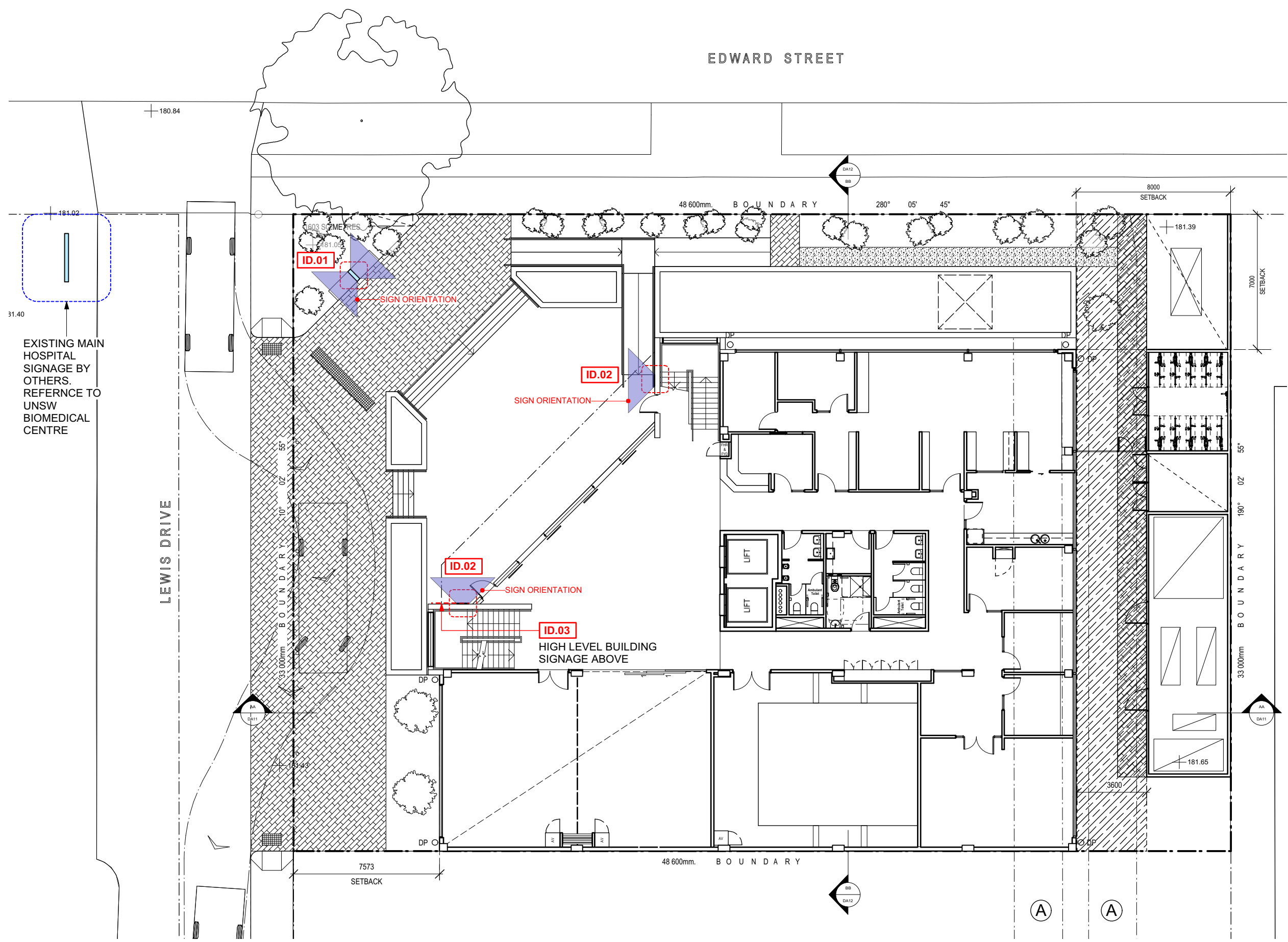


Budden Nangle Michael
& Hudson Architects
17/130 Pacific Highway
Greenwich NSW 2005
T (61 2) 9906 5599
F (61 2) 9906 8220

project
UNSW BIOMEDICAL SCIENCE
CENTRE

drawing

scale 1:200@A1; 1:400@A3
drawing no. DA15
drawn JP
checked issue
project no. 957
20/4/20 1



1 SITE REFERENCE PLAN
1:200 @ A1



2 ID.01 TOTEM CORNER SITE ENTRY SIGNAGE
1:20 @ A1



3 ID.02 WALL MOUNTED BUILDING SIGNAGE
1:20 @ A1



4 WEST ELEVATION PARTIAL SIGNAGE
1:100 @ A1



5 NORTH ELEVATION PARTIAL SIGNAGE
1:100 @ A1



issue	amendment	date
1	ISSUED FOR DEVELOPMENT APPLICATION	20/4/20



Budden Nangle Michael
& Hudson Architects
17/130 Pacific Highway
Greenwich NSW 2005
T (61 2) 9906 5599
F (61 2) 9906 8220



project
UNSW BIOMEDICAL SCIENCE
CENTRE

drawing

SIGNAGE PLANS
scale
VAR @ A1 & A3
drawing no.

drawn
JP
issue
DA16

checked
project no.
957
1

20/4/20



Do not scale drawings. Verify all dimensions on site

issue	amendment	date
1	ISSUED FOR DEVELOPMENT APPLICATION	20/4/20



1 PHOTOMONTAGE - LOOKING SOUTH EAST CORNER OF LEWIS DRIVE AND EDWARD STREET



Budden Nangle Michael
& Hudson Architects
17/130 Pacific Highway
Greenwich NSW 2005
T (61 2) 9906 5599
F (61 2) 9906 8220

project
UNSW BIOMEDICAL SCIENCE
CENTRE

drawing

PHOTOMONTAGE	
scale	drawing no.
NTS @ A1 & A3	
drawn	DA17
checked	issue
project no.	
957	1
20/4/20	



Do not scale drawings. Verify all dimensions on site

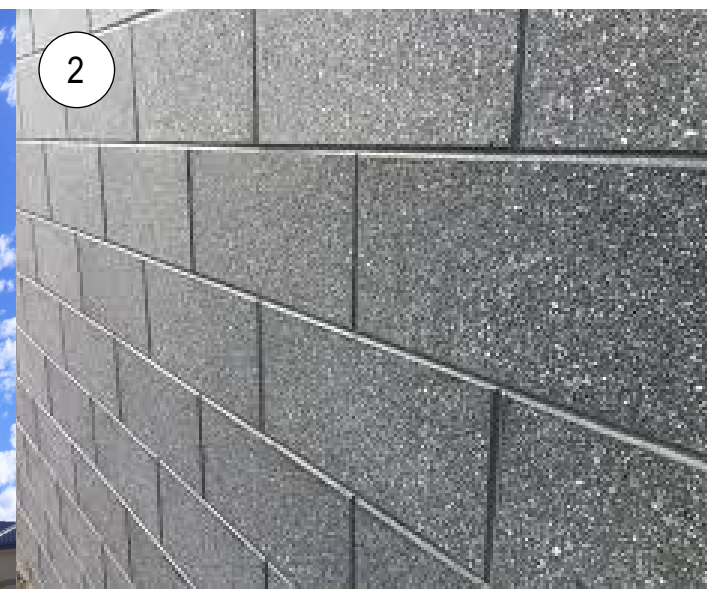
issue	amendment	date
1	ISSUED FOR DEVELOPMENT APPLICATION	20/4/20



ALUMINIUM CLADDING



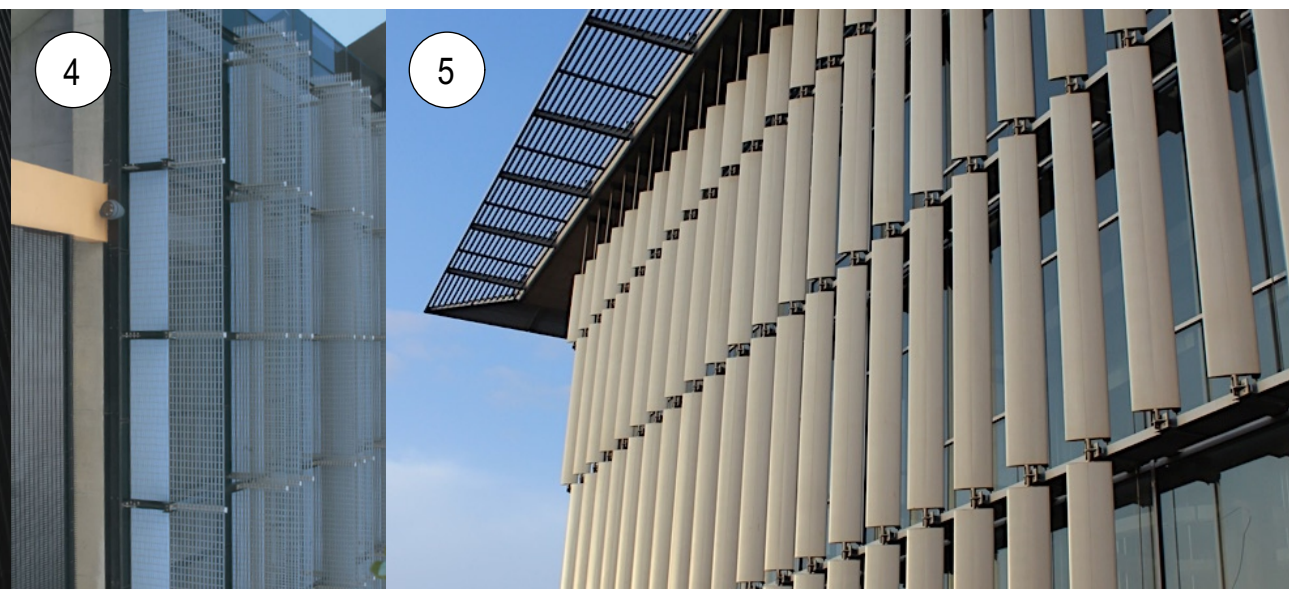
HONED CONCRETE BLOCKS



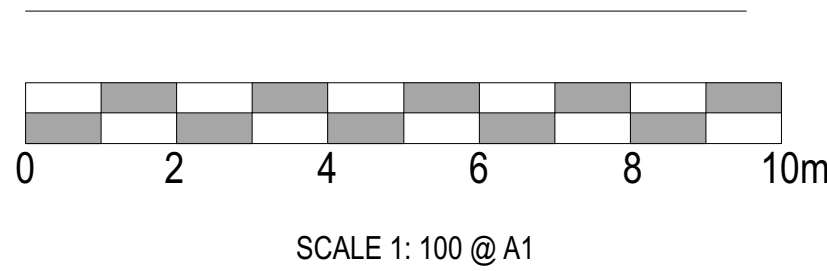
ALUMINIUM LOUVRE SCREENING



POWDERCOATED METAL MESH



ALUMINIUM LOUVRES



Budden Nangle Michael & Hudson Architects
17/130 Pacific Highway
Greenwich NSW 2005
T (61 2) 9906 5599
F (61 2) 9906 8220

project
UNSW BIOMEDICAL SCIENCE CENTRE

drawing

MATERIALS			
scale	1:100@A1; 1:200@A3	drawing no.	
drawn	JP	issue	DA18
checked			
project no.	957		1

20/4/20